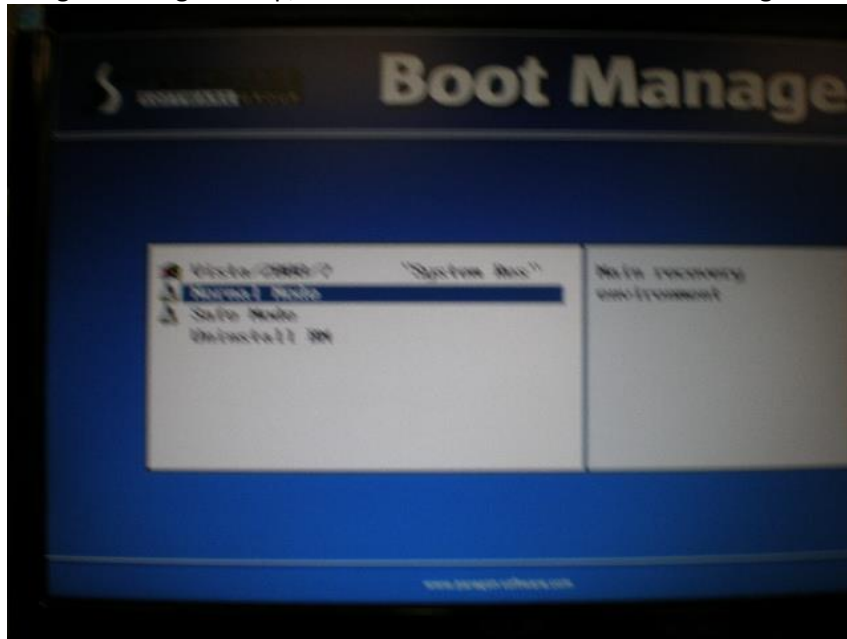


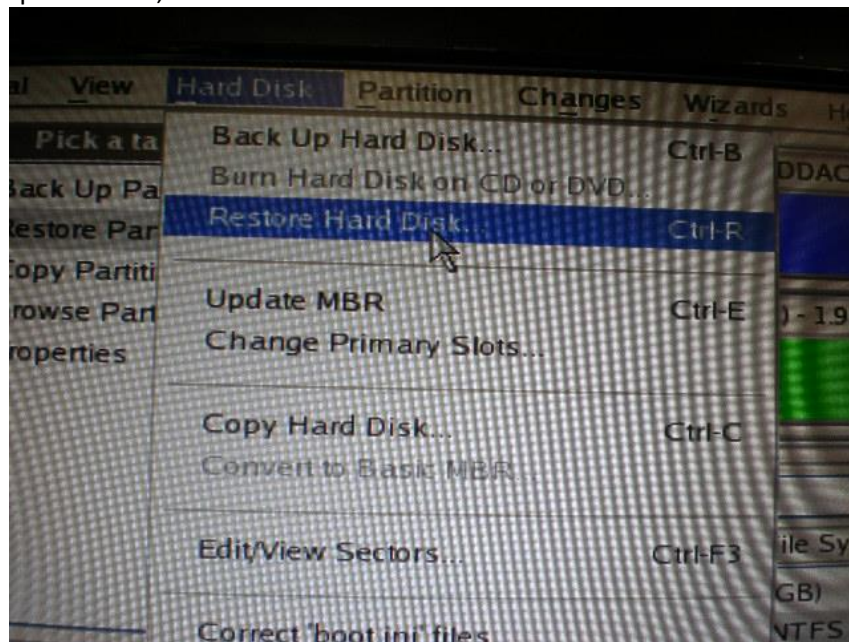
Restoring an 8872 from the Backup Capsule

*****WARNING: This will restore the PC to its default state. Any AVTrend updates, databases, Windows changes, etc will all be lost*****

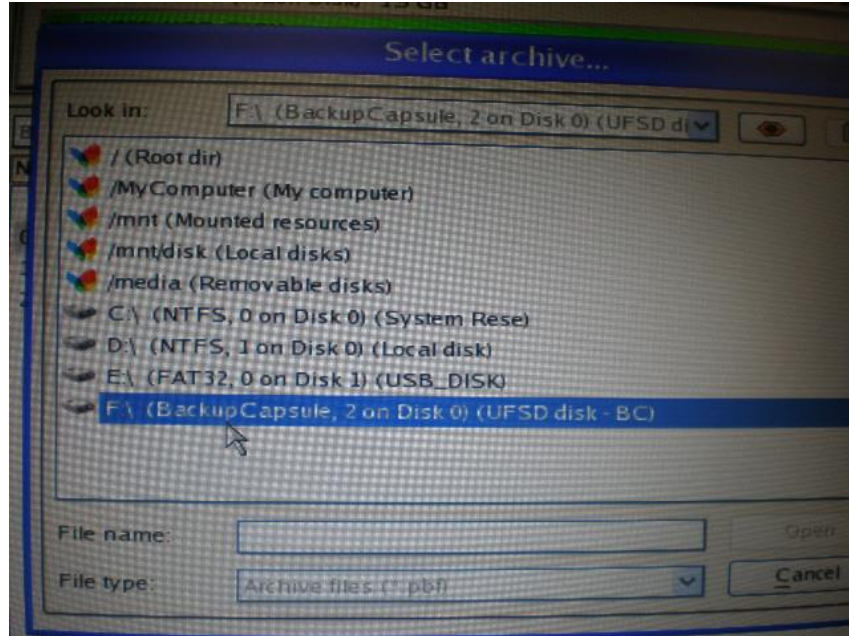
1. After pressing F7 during boot up, select Normal Mode in the Boot Manager



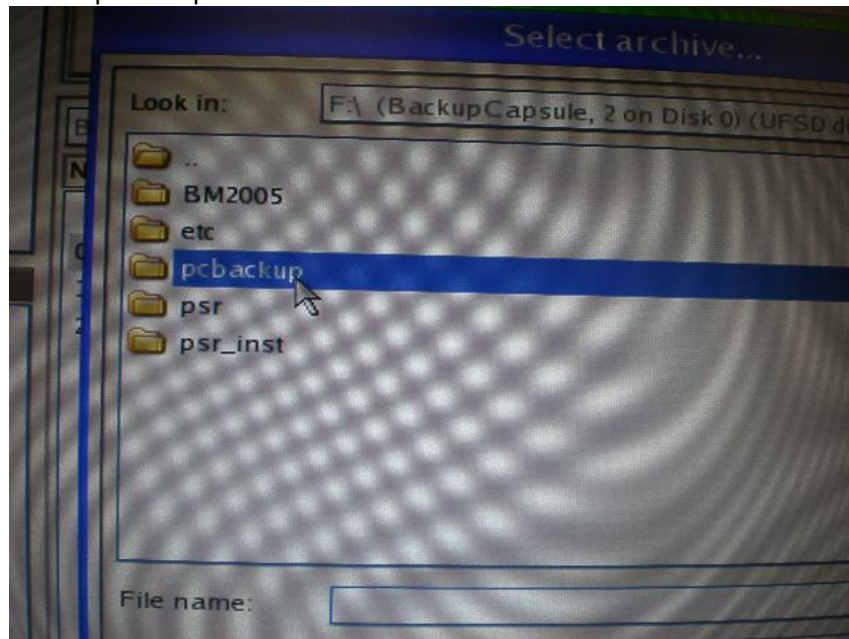
2. On the top menu bar, click Hard Disk and select Restore Hard Disk



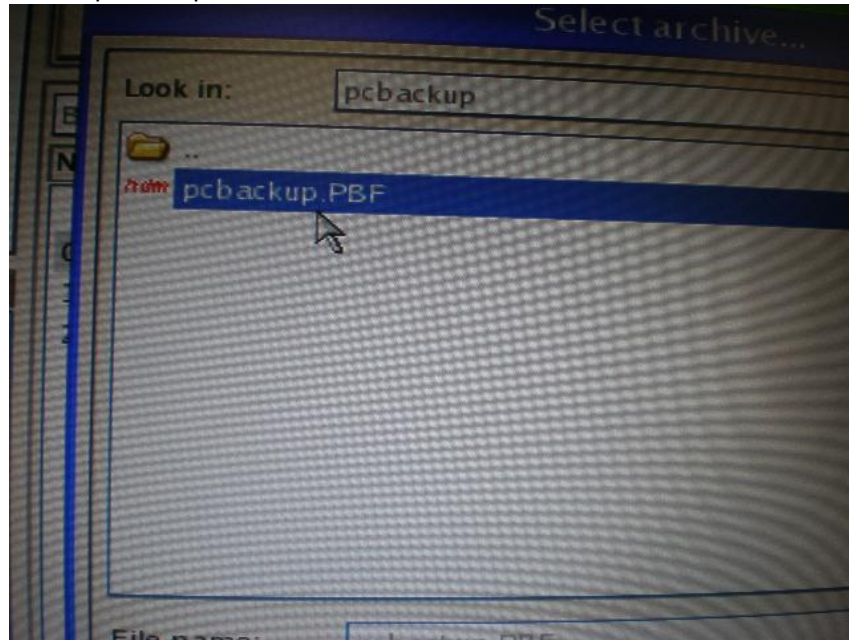
3. In the Select archive, double click on F:\(BackupCapsule....)



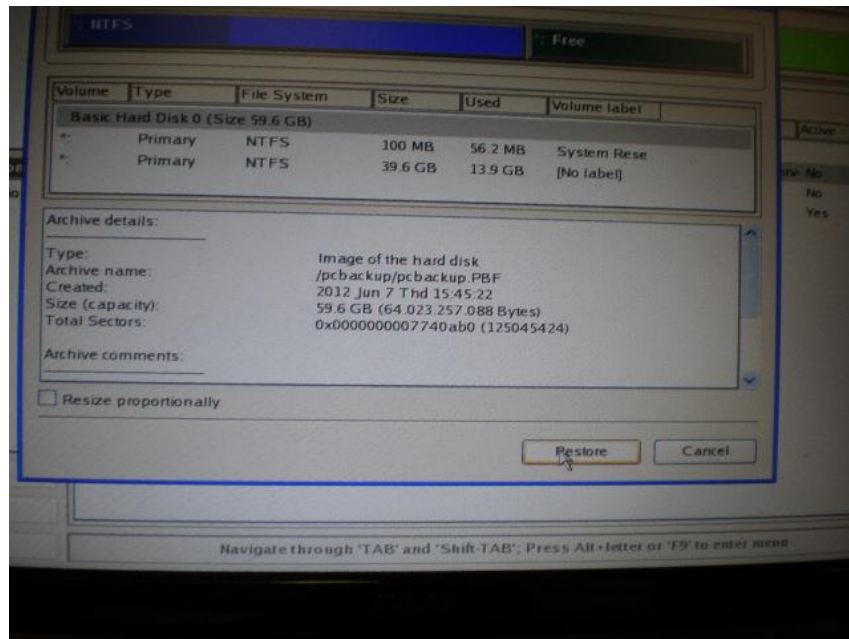
4. Double click on pbackup folder



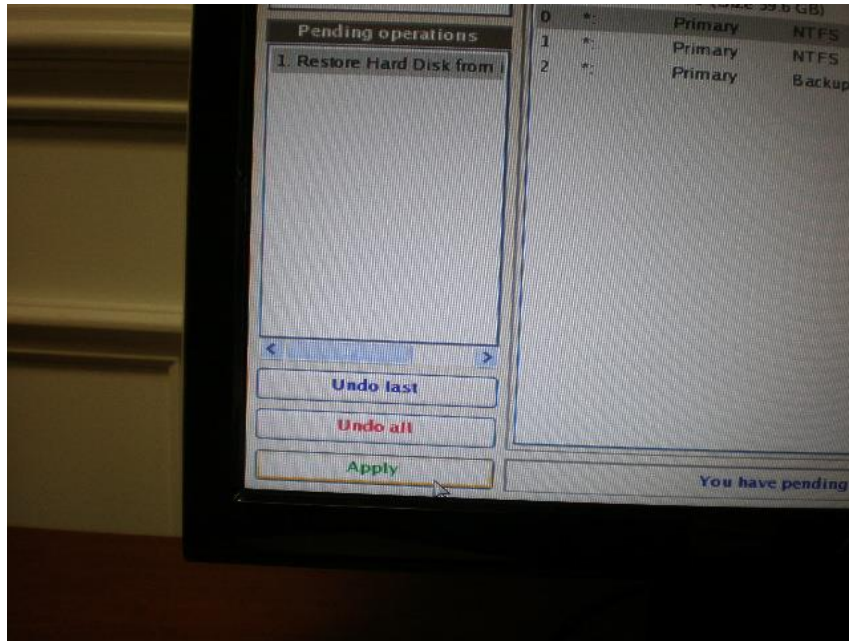
5. Double click on pcbbackup.PBF file



6. Click Restore to confirm the file selected



7. Under Pending operations (lower left corner), click Apply



8. Under Applying changes, select Yes. After the operation is complete, restart the logger.

