

## Remote Connectivity Options for 8872 Loggers

The 'Link to Logger' feature of AirVision / AVTrend cannot be used to connect to 8872 loggers due to the difference in their software architecture (when compared to 8816 / 8832). Below are several options for remotely connecting to an 8872 logger.

### Windows Remote Desktop

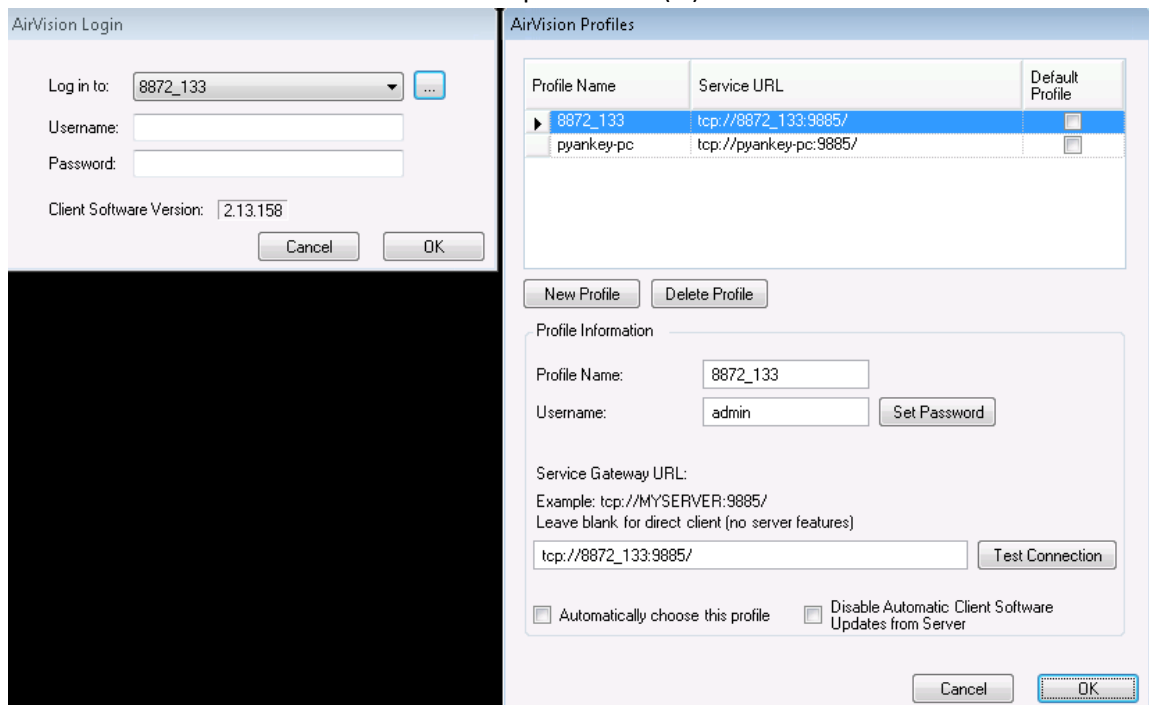
By default, Agilaire enables remote desktop on the 8872 loggers. Using 'Remote Desktop Connection' on a Windows PC, you can access the logger. You will need the IP of the logger (or the cellular modem/router it is connected to), the credentials for a Windows account on the logger (such as the default account 'admin'), and for port 3389 to be open between the PC being used and the logger (this would include any local firewalls and proper port forwarding in any site router).

### AirVision Client

You can connect to AVTrend on the 8872 logger using an AirVision client instance. This requires port 9885 to be open between the PC being used and the logger (this would include any local firewalls and proper port forwarding in any site router).

**NOTE: this will only provide access to AVTrend on the logger, you will NOT be able to access SQL Server Management Studio, the Apax Utility, or other Windows applications on the logger.**

1. Launch the AirVision client and click the ellipsis button (...)



2. Click the 'New Profile' button and enter a descriptive name such as "Site 1 8872" then click OK.

3. On the profile window, click on the row of the entry you just created. In the Service Gateway box, replace the profile name with the IP of the logger (or cellular router as applicable).

Site 1 8872 tcp://site 1 8872:9885/

New Profile Delete Profile

Profile Information

Profile Name: Site 1 8872

Username: Set Password

Service Gateway URL:  
Example: tcp://MYSERVER:9885/  
Leave blank for direct client (no server features)

tcp://166.123.123.123:9885/ Test Connection

4. Click OK when finished. Then, from the client login window, select the 8872 connection from the 'Log in to' pick list. Enter appropriate credentials and click OK to connect to AVTrend on the 8872.

AirVision Login

Log in to: Site 1 8872

Username:

Password:

Client Software Version: 2.13.158

Cancel OK

TeamViewer, VNC, PCAnywhere, Etc.

You can also use a third party application like TeamViewer, VNC, or PCAnywhere. These applications are not paid for, provided by, or supported by Agilaire and are the responsibility of the customer. As with the other connection methods, any required port(s) would need to be open between the PC being used and the logger (this would include any local firewalls and proper port forwarding in any site router).