

## Moving AirVision Server and the SQL Database to a New PC

*It is STRONGLY recommended that the new AirVision installation be of the exact same version as the old PC was running. This will limit any 'new issues' after the migration to the PC change and related items and eliminate AirVision issues. Once the new PC has been successfully running for some time, AirVision can be upgraded as desired.*

The new AirVision PC needs to have ports 9885 and 9886 open for the client instances to connect and function.

If outbound traffic is restricted, exceptions will need to be made for any site IP's that the server connects to for polling, etc.

On the old PC, close AirVision and stop the AirVision Server service, then set the service to manual so that AirVision is no longer trying to access the database.

Make a backup file of the database. Please contact Agilaire if you need instructions on how to do this.

After SQL Server has been installed on the new PC, open the Microsoft SQL Server Management Studio. Click the Connect button to connect to the SQL instance on that PC.

Restore the database backup file into the new SQL. Please contact Agilaire if you need instructions on how to do this.

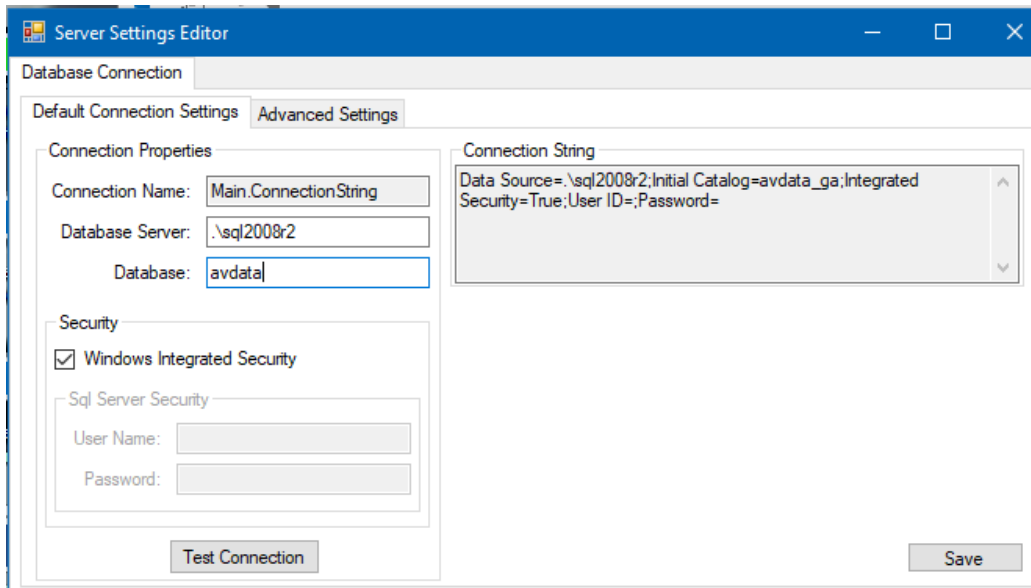
Start the installation of AirVision on the new PC using the instructions for a New AirVision Installation. Please contact Agilaire if you need these instructions. **Since AirVision Server is to be installed on a PC separate from SQL**, the installation may not be able to detect where SQL is installed. The Server Settings Editor screen holds the settings that allow AirVision to be pointed to the database.

*\*\*If the Server Settings Editor does not open during installation it can be opened manually by navigating to Programs -> Agilaire LLC -> AirVision Server -> Server Settings Editor\*\**

In the Database Server field put in the name (or IP address) of the PC where the database is located. In the Database field put in the name of the database, which should be AVData if using the default setting.

- If you are using Windows Integrated Security, then the account that is set to run the AirVision Server Service will need access rights to the AirVision database on the SQL server (preferably db\_owner).
- If not, enter SQL credentials that have been established on the SQL server and which give access rights to the AirVision database (preferably db\_owner).

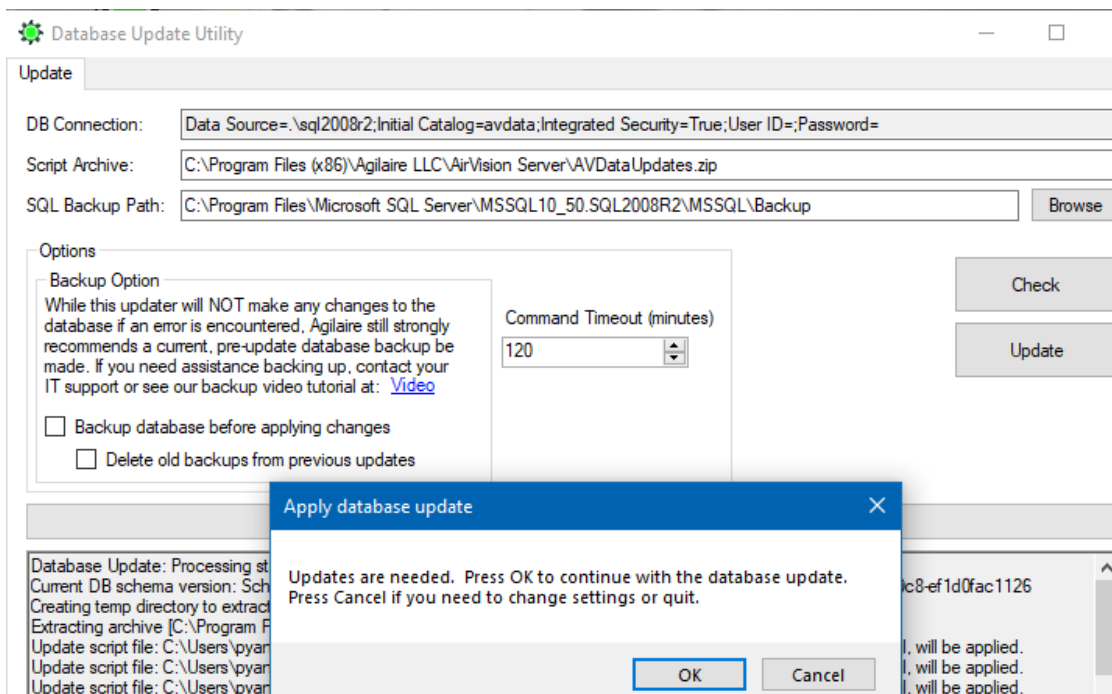
Click the Test Connection button. If a successful message box pops up click OK, then click the Save button at the bottom right. You will not see anything happen when the Save button is clicked. After saving click the X button in the top right corner to close the screen.



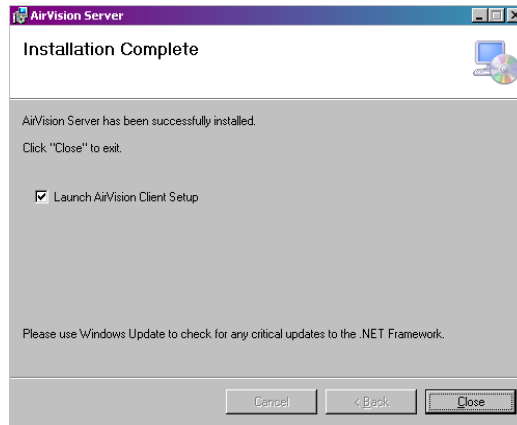
The **Database Update Utility** will open if updates need to be made to the database. *This should NOT be the case as you should be installing the same AirVision version that was on the old PC.*

If the updater does launch, the default is NOT set to back up the database prior to the attempted upgrade – click ‘Cancel’ on the pop-up and set this option if so desired. When ready, click OK or Update (if you modified any options).

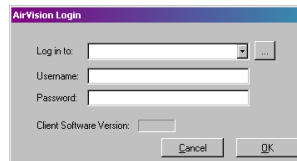
If the updater completes successfully, click the X in the top right corner of the screen to close the backup utility. *IF an exception is triggered, save the exception report and send it to Agilaire for support / assistance.*



The installation will continue until it gets to the Installation Complete screen where it will show that AirVision Server has been installed successfully. If the **AirVision Client** is to also be installed on the same PC, leave the Launch AirVision Client Setup box checked, then click the Close button and it will automatically start the installation for AirVision Client. If the Client is not to be installed on the server PC, remove the check mark and click Close.

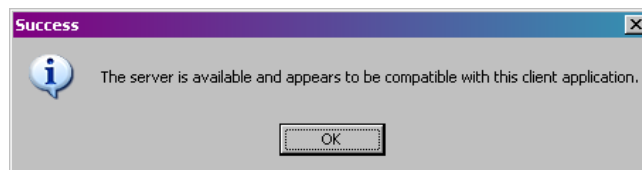
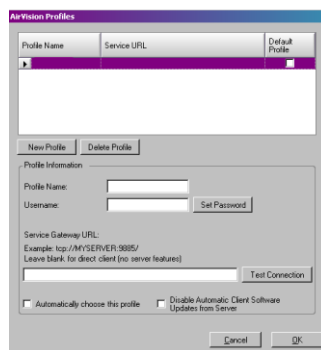


On each client PC open the login box and click the ellipsis button at the end of the Log in to: field to open the properties screen.



Highlight the profile listed in the top section. Fill in the Service Gateway URL field at the bottom with tcp:// (new AirVision Server name or IP address):9885/

Once the properties has been set up click the Test Connection button at the end of the URL field. If the database is connected it will return a compatible message. Click Ok to save the settings on the properties screen.



**AirVision cannot run without the services running.** If the service was not started from the installation it can be started manually by opening the Control panel -> Administrative Tools -> Services and selecting AirVision Server service and clicking the start button. The service will be set to automatic by the install and should start automatically any time unless it has been manually stopped by the user; then the service will have to be manually started.

It is recommended that the service be reconfigured to restart automatically upon a failure:

