

Open Reports->Statistical Reports->Data Analysis. Choose the parameter you want and the time range, and then “Generate Report” from the ribbon.

The screenshot shows the AirVision software interface. The 'Data Analysis' ribbon is active, with the 'Generate Report' button highlighted. A report generation window is open, showing the following details:

- Date Range:** Start Date: 01/01/2006 0000, End Date: 03/30/2006 2359
- Average Interval:** 001h (Minute average from instantaneous), 024h (24 hour sample period), 003h (003h), 005m (5 minute average from 5 minutes), 010m (10 minute average from 10 minutes), 015m (15 minute average from 15 minutes), 001h (Hourly average of 60 minutes), 001d (24 hour average from 24 hours)
- Parameter Selection Table:**

Site Group	Site Name	Parameter Group	Parameter Name	Parameter Template Name	Parameter Description
Suburb	01_KNOX	Gases	01_O3	OZONE_PP8	01_OZONE, channel 1
Suburb	01_KNOX		03_PH2SBR4W		03_PH2SBR4W, channel 3
Suburb	01_KNOX		04_PH2SBR4W		04_PH2SBR4W, channel 4
Suburb	01_KNOX		08_TEMP	AMSTEMP	08_TEMP, channel 8
Suburb	01_KNOX	MET	09_W5		09_W5, channel 9
Suburb	01_KNOX	MET	10_WD		10_WD, channel 10
Suburb	01_KNOX		13_RAINFALL	RAINFALL	13_RAINFALL, channel 13
Suburb	01_KNOX		14_SOL_RAD	SOLARRAD	14_SOL_RAD, channel 14
- Report Output Table:**

Interval	Date	01_KNOX	01_O3
001h	1/1/2006 00:00:00		65.5
001h	1/1/2006 01:00:00		18.4
001h	1/1/2006 02:00:00		17.2
001h	1/1/2006 03:00:00		18.7
001h	1/1/2006 04:00:00		18.2
001h	1/1/2006 05:00:00		16.5
001h	1/1/2006 06:00:00		14.4
001h	1/1/2006 07:00:00		13.6
001h	1/1/2006 08:00:00		13.9
001h	1/1/2006 09:00:00		14
001h	1/1/2006 10:00:00		15.7
001h	1/1/2006 11:00:00		15.5
001h	1/1/2006 12:00:00		16.2
001h	1/1/2006 13:00:00		15.8
001h	1/1/2006 14:00:00		15.3

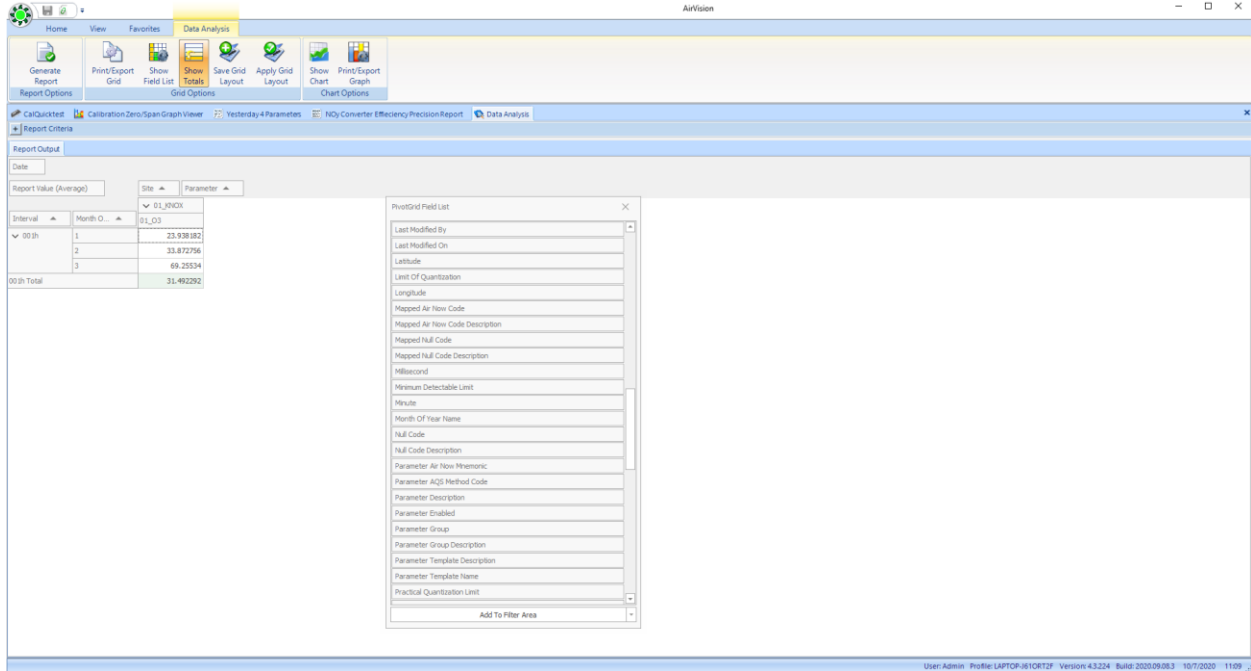
Right click in the grey area at the top and choose “Show Field List” and expand:

The screenshot shows the AirVision software interface with the 'Show Field List' dialog box open. The dialog box lists various fields that can be added to the report. The 'Date' field is selected and has been moved to the 'Drop Filter Fields Here' area at the top of the report output table.

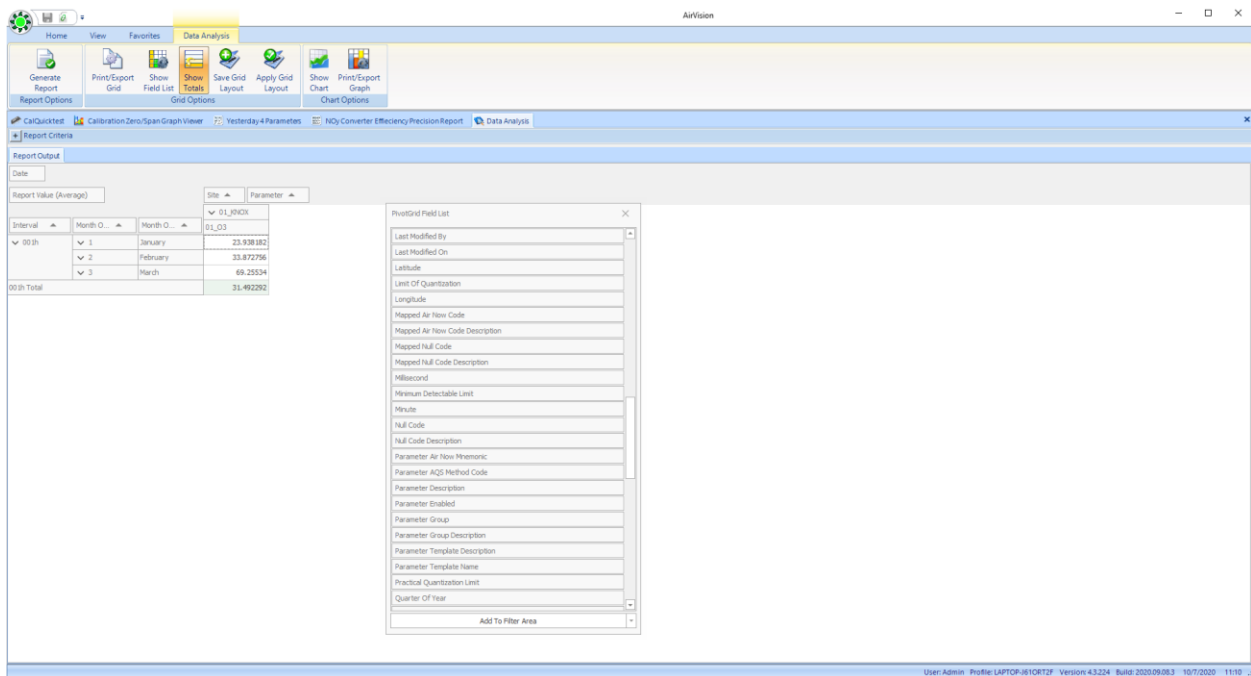
- Drop Filter Fields Here:** Date
- Report Output Table:**

Interval	Date	01_KNOX	01_O3
001h	1/1/2006 00:00:00		65.5
001h	1/1/2006 01:00:00		18.4
001h	1/1/2006 02:00:00		17.2
001h	1/1/2006 03:00:00		18.7
001h	1/1/2006 04:00:00		18.2
001h	1/1/2006 05:00:00		16.5
001h	1/1/2006 06:00:00		14.4
001h	1/1/2006 07:00:00		13.6
001h	1/1/2006 08:00:00		13.9
001h	1/1/2006 09:00:00		14
001h	1/1/2006 10:00:00		15.7
001h	1/1/2006 11:00:00		15.5
001h	1/1/2006 12:00:00		16.2
001h	1/1/2006 13:00:00		15.8
001h	1/1/2006 14:00:00		15.3
001h	1/1/2006 15:00:00		13.5
001h	1/1/2006 16:00:00		10.4
001h	1/1/2006 17:00:00		7.7
001h	1/1/2006 18:00:00		6.4
001h	1/1/2006 19:00:00		5.4
001h	1/1/2006 20:00:00		3.9
001h	1/1/2006 21:00:00		1.2
001h	1/1/2006 22:00:00		1.6
001h	1/1/2006 23:00:00		0.6
001h	1/2/2006 00:00:00		54.9
001h	1/2/2006 01:00:00		0.9
001h	1/2/2006 02:00:00		1.6
001h	1/2/2006 03:00:00		0.6

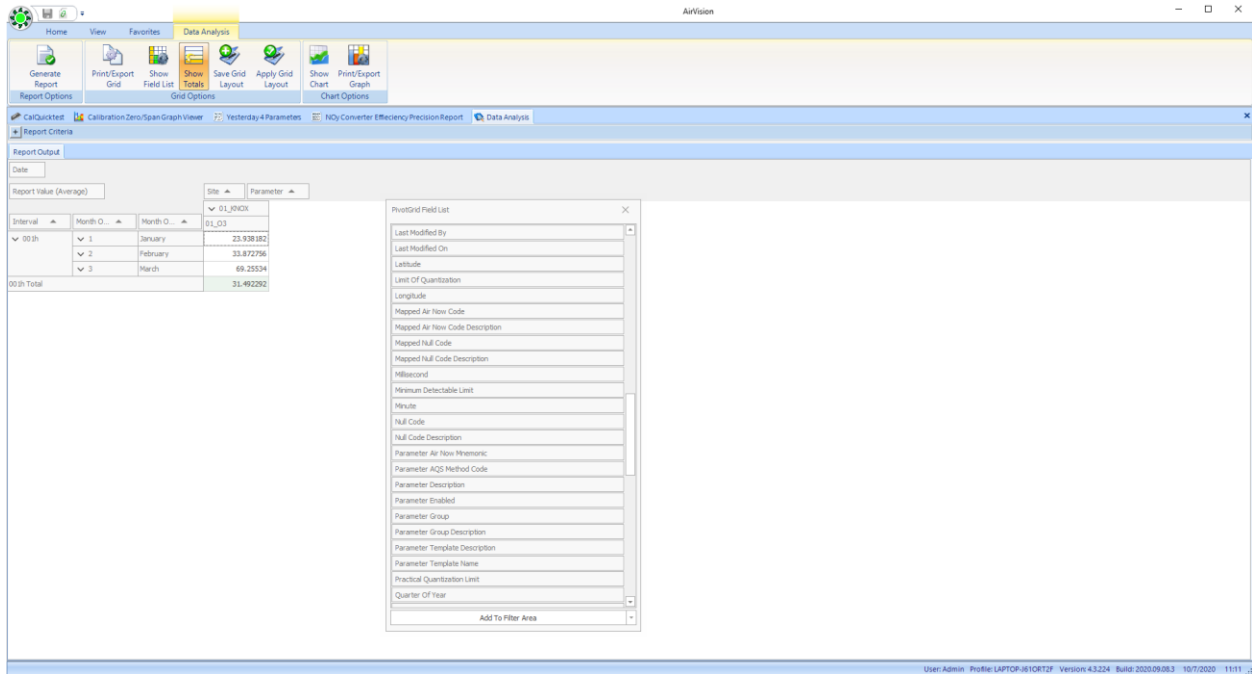
Select “Month of the year” and drag it just beside “Date”. Drag “Date” up to “Drop Filter Fields Here” area.



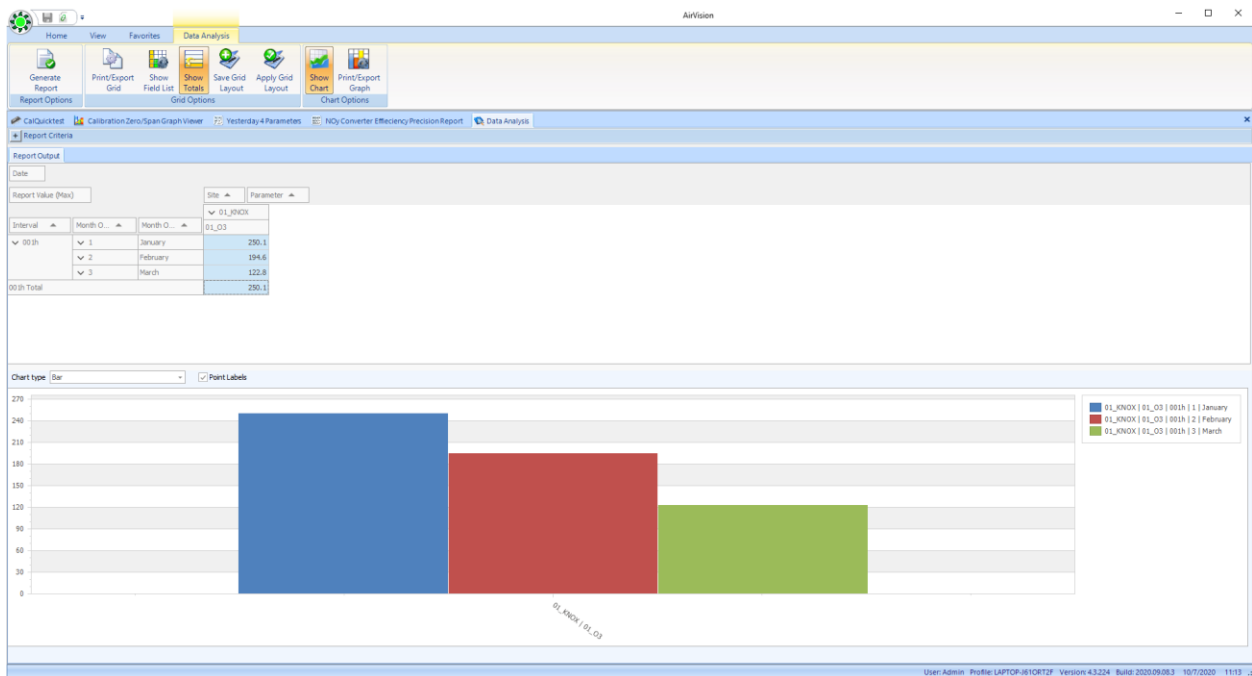
If you want the names too, drop “Month Of Year Name” from the field list to the right of “Month of Year”



Finally, in the top left, click on “Report Value (Average)” to get pick list, and choose “Max”



To export, use the “Print / Export Grid” at the top, or you can drag-select some data points and choose “Show Chart” to get some charting options as well.



Choose “Save grid layout” to save your specialized query to a file to load later.