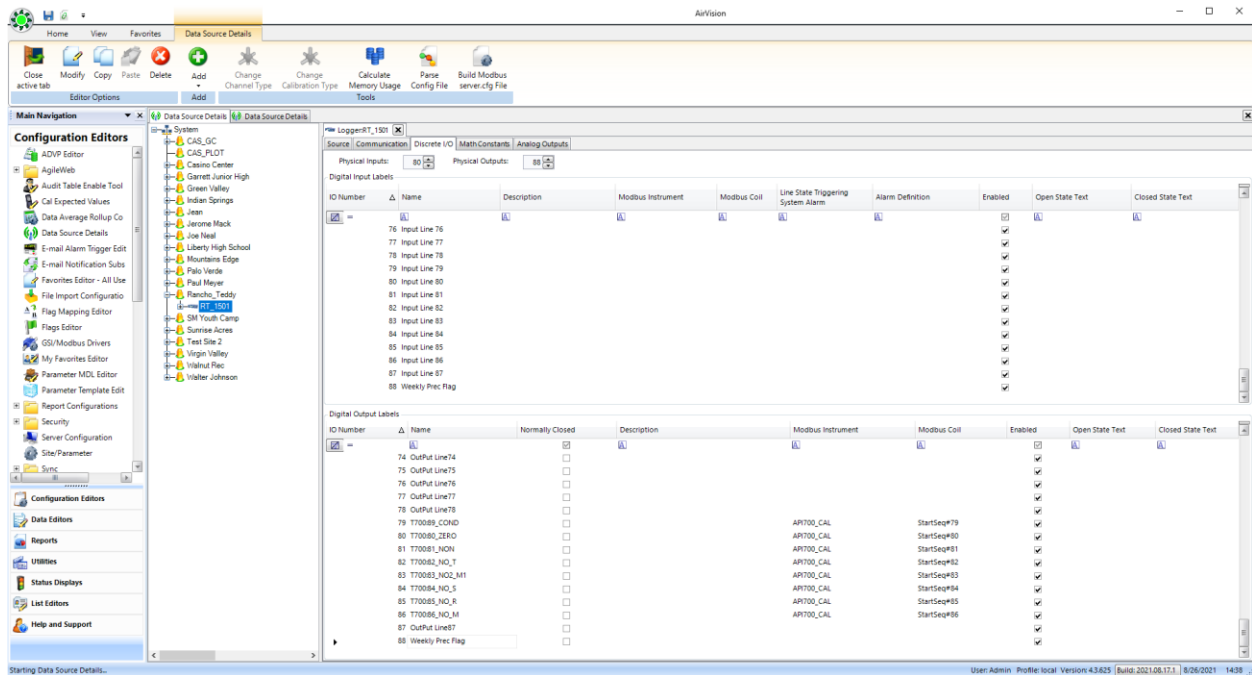
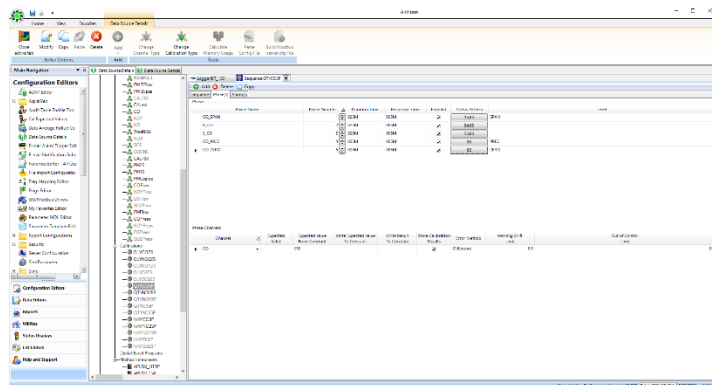
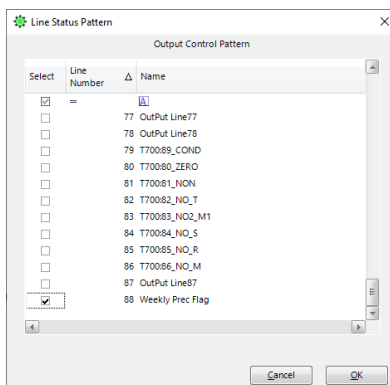


Open the Data Source Details under Config Editors. Expand the site, logger, and channels.

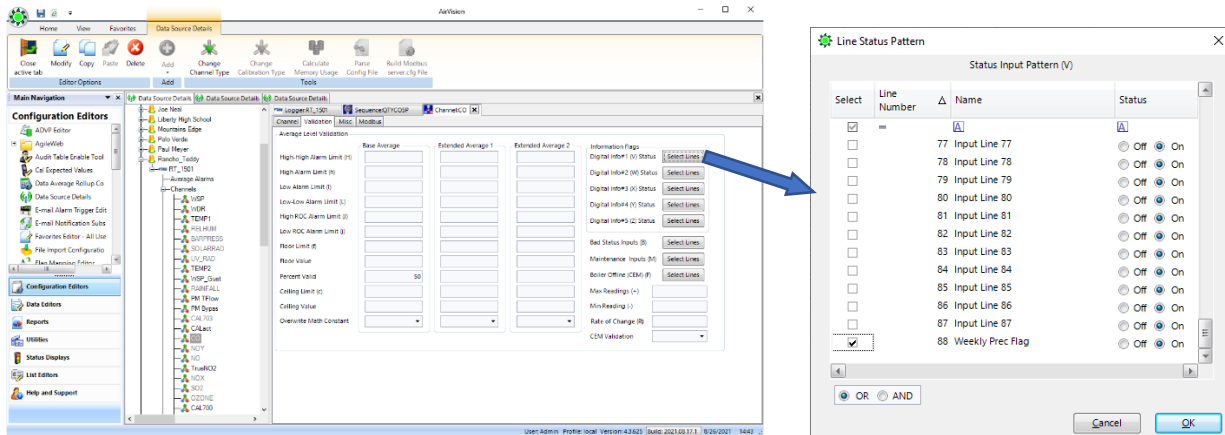
Double-click on the logger, select the “Discrete I/O” tab and find a pseudo output/input pair (or pairs, if you need more than one cal level flagged) that are not being used. In this case, I will use #88 and label it for the “Weekly Precision”



Then expand the calibrations and double click the cal sequence name and click the Select Lines button on the phase(s) during which to add the flag (probably all just to be safe) and add the output to the list of lines to activate Repeat this step for each of the phases.



Double click on the channel name affected by the cal and click the Validation tab. Click the Select Lines button beside of the Digital Info (V) Status and select one of the Input Lines such as Input Line 10 by checking the Select box on the left and click the OK button then click the save button.



In the Flags Editor (Configuration0 set the Mapped AQS Null Code to AX for the V flag, making sure that the AX null code is not set for the p flag. Also, change the priority to '6' (lower number = higher priority), "C" is probably set for '7' right now. then click save.

