

## Model 8809 Remote Valve System

With the increasing ability to control gas analyzers remotely, some site visits are only necessitated by the need to switch inlet filters and perform leak checks.

*Until now.*

The Model 8809 Valve Panel allows you to remotely switch three analyzers through three sets of filters. You can also perform automated leak checks through your Agilaire Model 8872 data logger.

All components are PFE coated (valves, tubing, manifold, and connectors). Indicator lights indicate activated/closed valves, and are controlled through a Modbus-compliant control module, compatible with the Model 8832, Model 8872, or other Modbus-compatible loggers. Solenoids operate in a normally open environment for 'fail safe' operation to protect analyzer sample pumps.

### Specifications

#### Dimensions

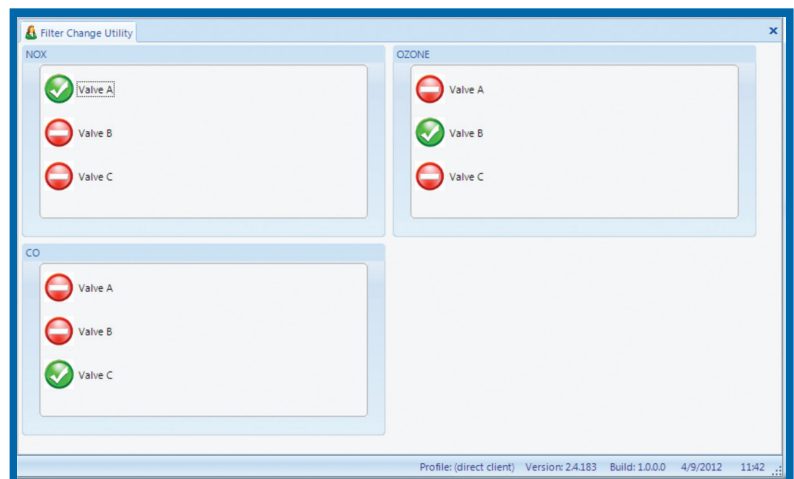
17" Rack Mount, 22" High, 14" Deep

#### Power Requirements

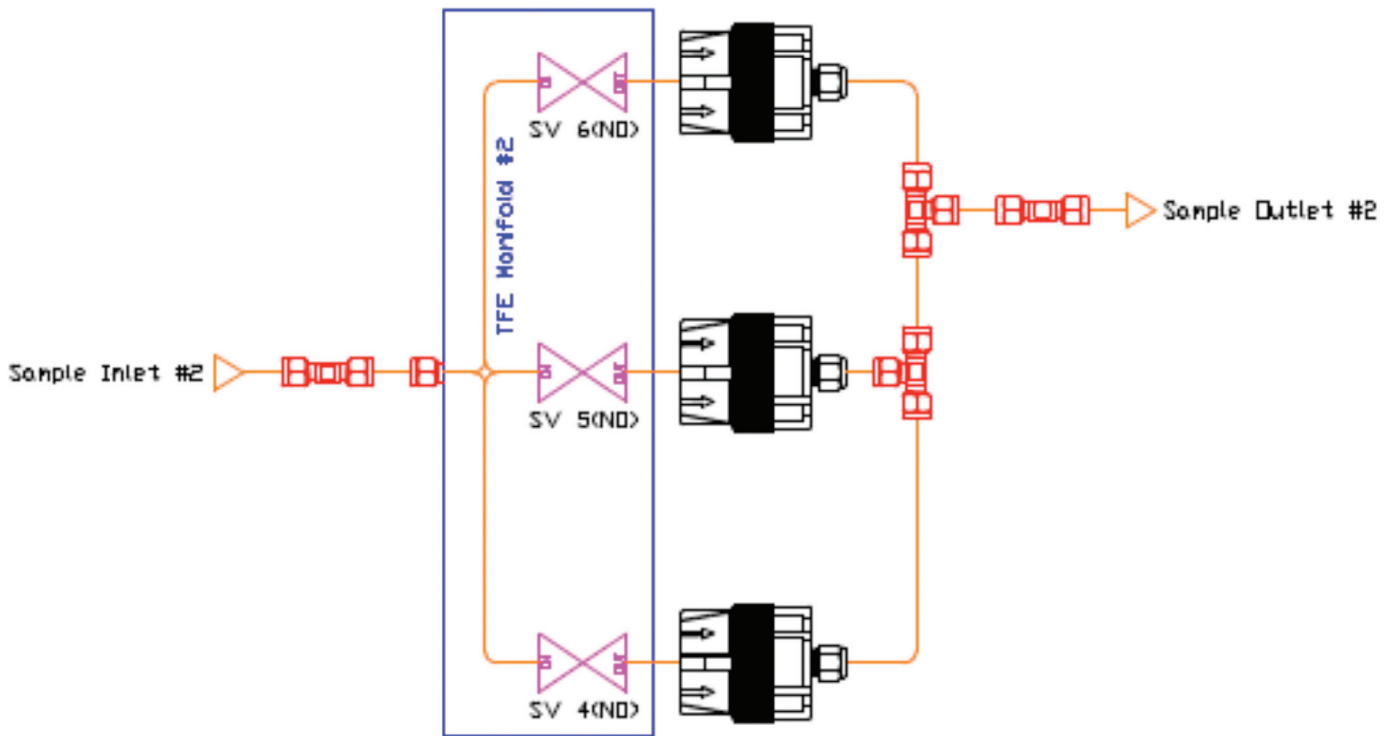
- 120VAC



*Rack Mount Unit*



*Remote Valve Change Utility in 8872*



Sample Flow Diagram

SQL Execution Tool
 Leak Check Utility

Primary Instrument: 01\_KNOX : 01\_OZONE

01\_OZONE

OutPut Line1
 OutPut Line2
 OutPut Line3

Flow Limit: 20

Pressure Limit: 10

Timeout Interval: 300S

Time Elapsed: 00:01:22.6146831

Status: PASS

Readings		
Time Stamp	Flow Value	Pressure Value
04/20/2012 14:05:51	330.94	50.81
04/20/2012 14:05:58	330.94	50.81
04/20/2012 14:06:03	330.94	50.81
04/20/2012 14:06:10	330.92	50.81
04/20/2012 14:06:15	330.92	50.81
04/20/2012 14:06:21	330.94	50.81
04/20/2012 14:06:28	330.94	3
04/20/2012 14:06:33	330.94	3
04/20/2012 14:06:39	330.94	3
04/20/2012 14:06:45	330.92	3
04/20/2012 14:06:52	330.94	3
04/20/2012 14:06:58	330.94	3
04/20/2012 14:07:03	330.94	3
04/20/2012 14:07:09	8.5	3

Automated Leak Check Utility