

SiteNode *Agilaire Model 8872*

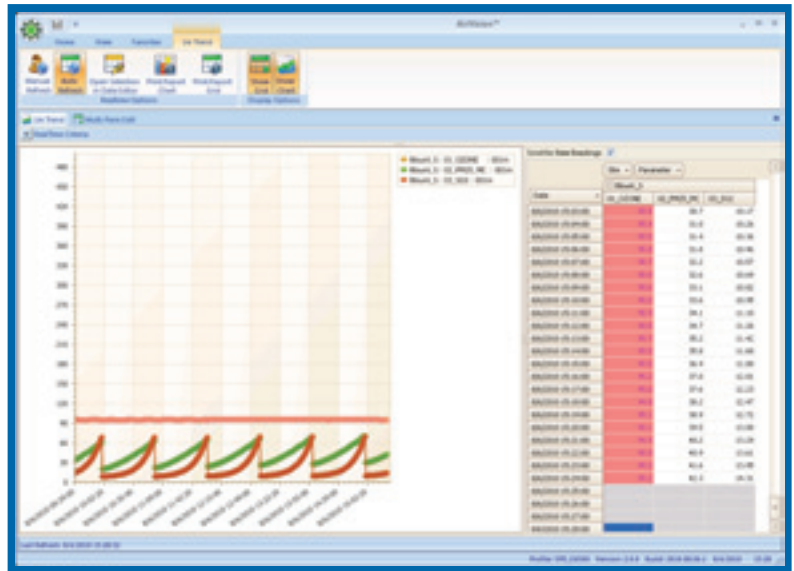
The Model 8872 SiteNode serves as both the primary data collection device for smart instruments and the host for commonly used PC based programs for analyzer maintenance or running site GCs, BTEX instruments, etc.

Connected to a standard or touch-screen LCD and interface devices (mouse, keyboard) SiteNode provides graphical review of real-time data, allows the user to enter annotations on data, and includes an Electronic Site Logbook. Data, annotations, and logbook records can be synchronized with an AirVision™ server over broadband connection.

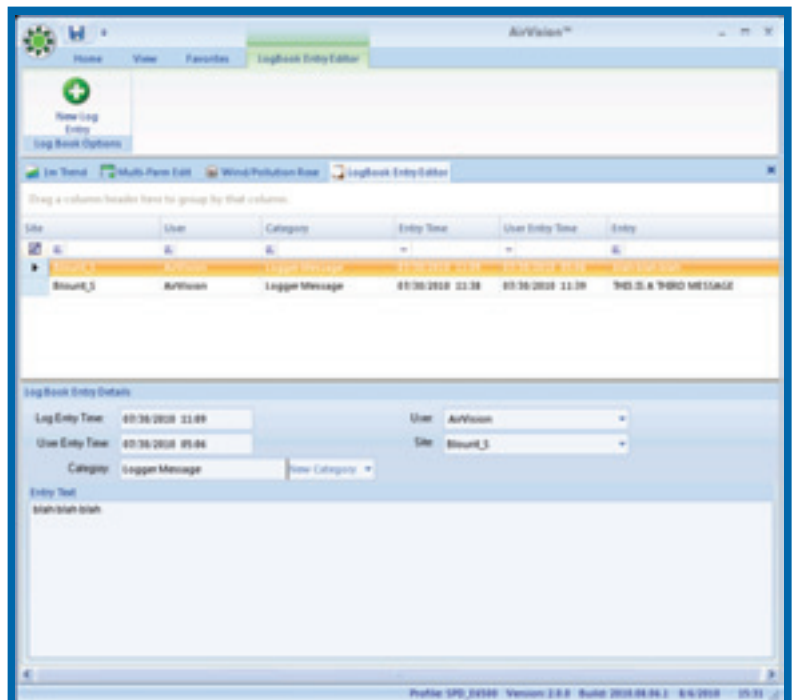
The SiteNode also provides data backup for up to 20,000,000 data points, or roughly a year's worth of 1-minute data for 40 parameters. Data can be allocated by parameter, so finer resolution data can be stored as well. Data beyond the defined limit will be automatically written to archive files, which can be removed and restored on the Node or an AirVision server.

Optional direct instrument drivers can connect the Site Node directly to:

- MetOne BAM-1020
- TEOM 1400 / 1405
- API E-Series
- Thermo C-Series
- Thermo i-series
- Synspec Ozone Precursor GC
- Vaisala, Climatronics, and MetOne RS-232 based sensors



Real-Time Trend and Tabular Displays



▲ Site Logbook

Specifications

Dimensions

5.25" H x 17" W x 17" D
19" Rack Mount Ears

Power Requirements:

120 VAC, 30 watts

Operating Temperature:

0 to 50 DegC

Inputs / Outputs:

- Four (4) RS-232 Ports
- Ethernet Port (10/100)
- Up to 24 Voltage Inputs (150 mV, 1V, 5V, 10V ranges)
- Up to 18 Status Inputs
- Up to 18 Relay Outputs (5A)
- Additional External I/O Available

Data Storage:

Up to 20,000,000 data points active
Up to 100,000,000 in archive files

Communications:

Telephone Modem, Satellite,
TCP/IP, Wireless IP
Local WiFi Terminal Connection

User Connections:

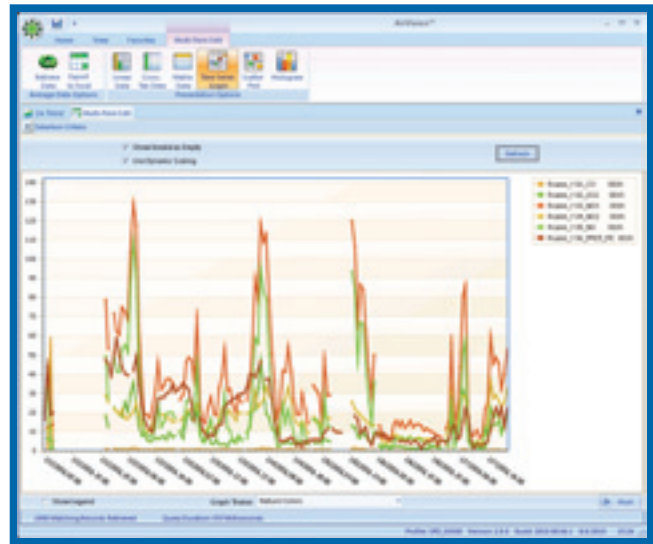
- Ethernet
- HDMI Video / USB Input

Software Capabilities

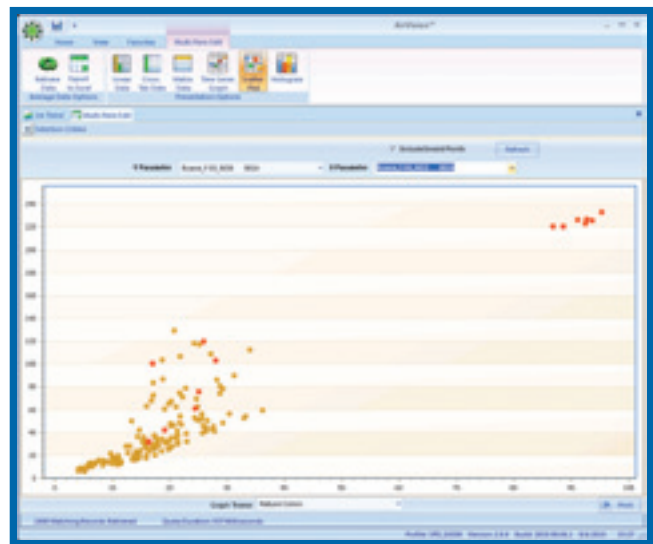
- Local Configuration Management
- Real-Time Trend and Tabular Displays
- Data Annotation
- Site Logbook
- Daily, Monthly, and Calibration Reports
- Data Analysis Tools

Software Options

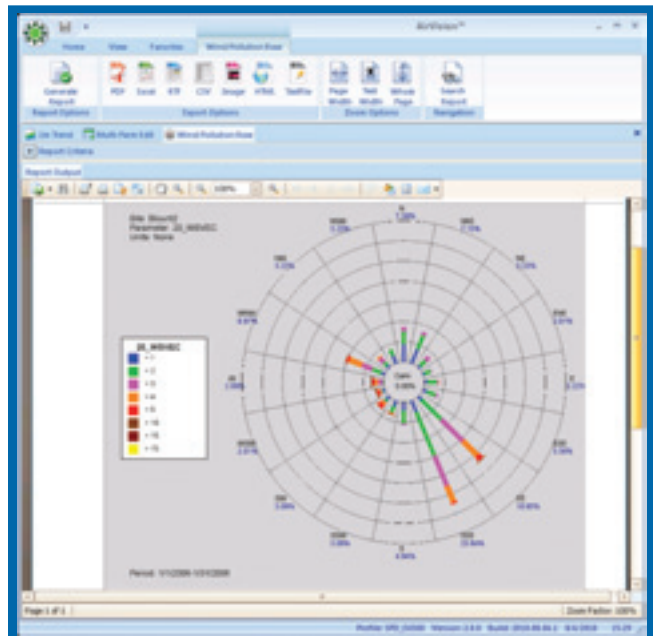
- Direct Poll of BAM, TEOM, API, TEI Analyzers
- Automatic Data Validation Processor
- AutoSync to AirVision / AVCORE



▲ Annotate Historical Data



▲ Analyzer Data ▼



2904-B Tazewell Pike, Suite A
Knoxville, TN 37918

865-927-9440 phone
865-927-9552 fax

info@agilaire.com email
www.agilaire.com web