

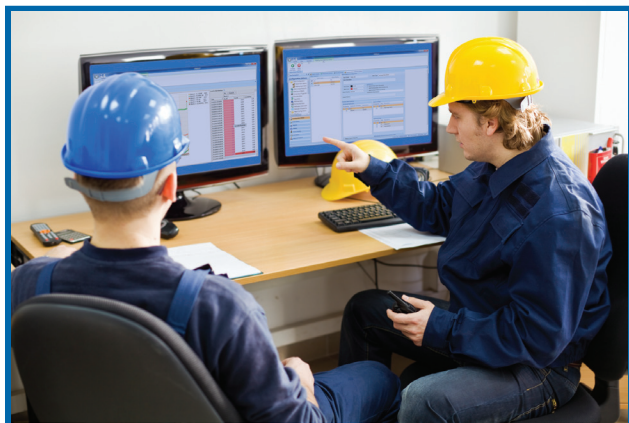
Keep it simple. We all know the mantra. But why can't CEM data management systems follow this simple rule?

Part of it has been the growth of the 40CFR75 Acid Rain and NOX trading programs. CEM software vendors chasing this huge market have burdened their systems with additional functions for handling missing data substitution, XML electronic reporting, and the dozens of specialized QA rules required under 40CFR75. But if you're an industrial source with basic 40CFR60 and MACT reporting rules, it's an endless parade of "ignore that screen" and "just skip that part, it doesn't apply to you."

AirVision/CEM to the rescue.

There's a simple elegance in a system that was designed to do exactly what it was supposed to do - a cellphone that just makes calls, instead of trying to play music. A DVD player that just lets you play your DVDs, rather than trying to connect to the internet and play Tic-Tac-Toe with someone in Iceland.

That simple elegance is the basis for AirVision/CEM. More basic sources need to have their 40CFR60/MACT requirements met, with a reasonable degree of functional options, without being burdened by more complex regulatory requirements.



Stay informed. Stay compliant.

Modern Alarm Notification

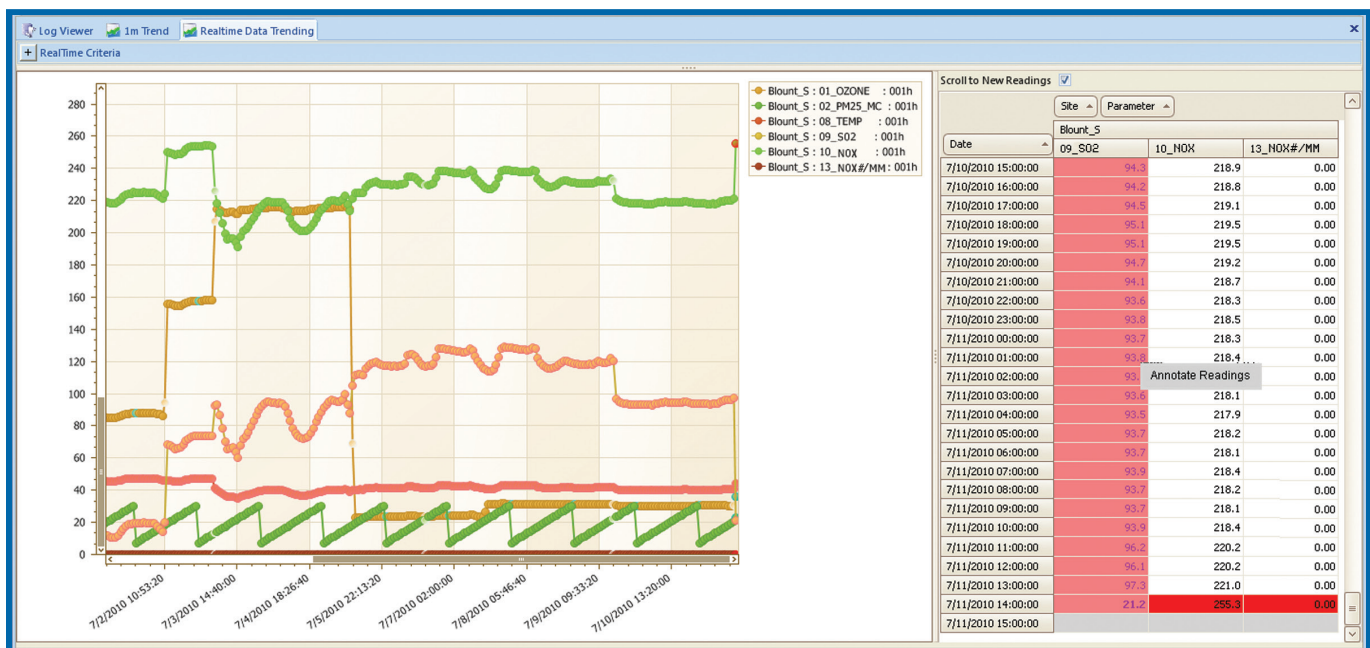
AirVision does offer a modernized approach to alarm management and routine reporting, allowing alarms and schedule reports to be distributed via e-mail / SMS to your desktop, remote users, smartphones, and corporate data servers. Users can even set up different devices to receive different kinds of notifications.

Cement MACT Support

Most older CEM software systems do not incorporate the new logic for 7-day and 30-day rolling averages (delineating upset / startup / shutdown days) required for the new Cement MACT rules. AirVision/CEM includes this capability out of the box, representing an easy upgrade for older systems.

Real-time trend display

Supports any average interval (10s, minute, 6-minute, hourly, daily, etc.). The list of parameters can be minimized for more screen space. Application can be set to automatically open one or more such displays automatically on user login.



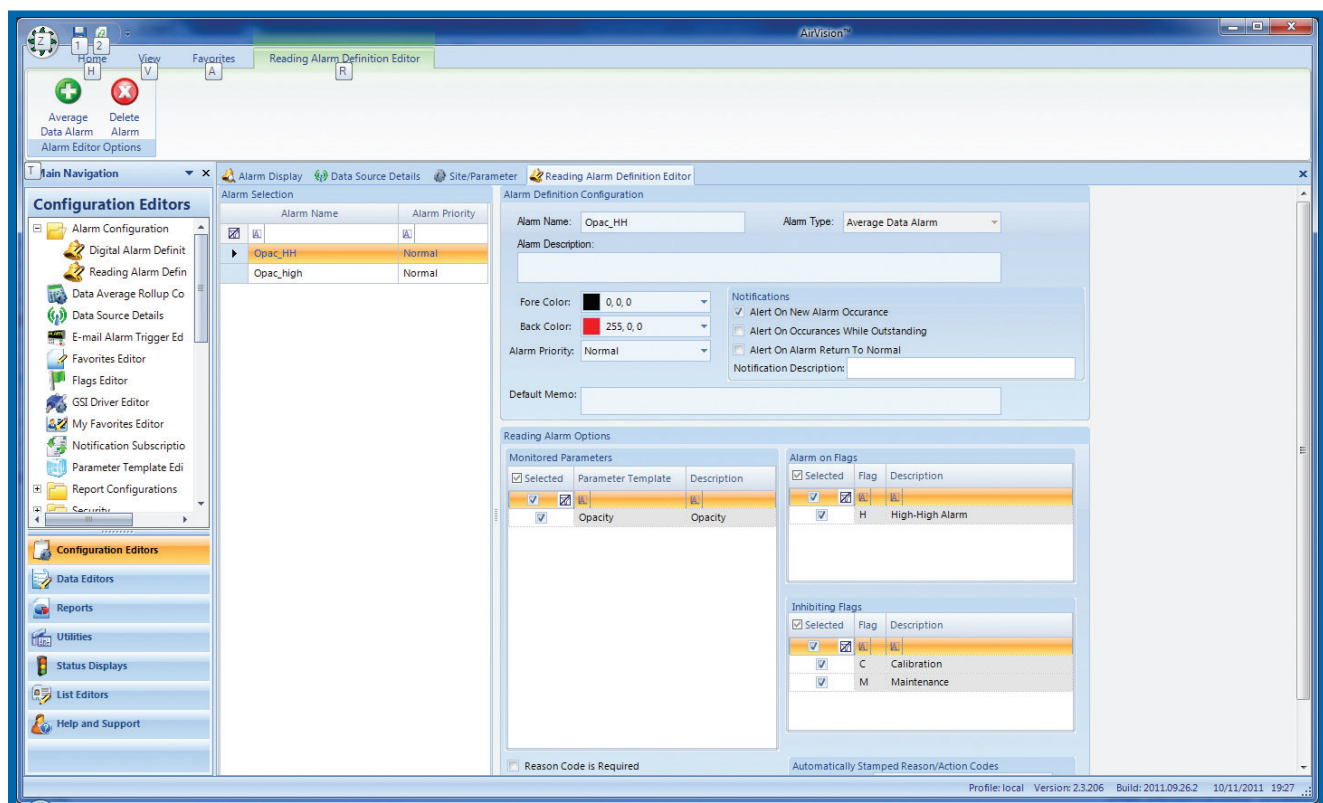
- ▲ Alarm Display Panel - user can filter if they want to only see active alarms, unacked alarms, etc. When an alarm is selected, the user can see details (including a list of the triggering readings) via the bottom panel.

We can tie into what you've got.

CEM System Control

AirVision offers several options for the CEM control:

- Modbus or OPC connection to existing PLCs and follow existing cal/blowback programs
- Support for existing ESC 8816 / 8832 controllers, including configuration download
- Internal 'virtual logger' that can connect to inexpensive I/O modules



- ▲ *Alarm Definition Screen- triggers on any flag / limit, so it can be used for both high/low alarms, and instrumentation fault alarms. User can define colors, priority, whether new averages cause new notifications, and whether the user should be notified on return to normal condition. In addition to the alarm panel, the user can receive email notifications.*



Fully stocked with the tools you need.

Reporting Functions

AirVision/CEM includes the following reports as standard::

- Daily Summary Report
- Monthly Matrix Report
- Excess Emissions / Monitor Downtime
- Unit Operation Report
- 7-Day / 30-Day Rolling Average
- Monitor Availability %
- Cumulative Emissions
- Calibration Results / Trend Plot
- Audit Trail



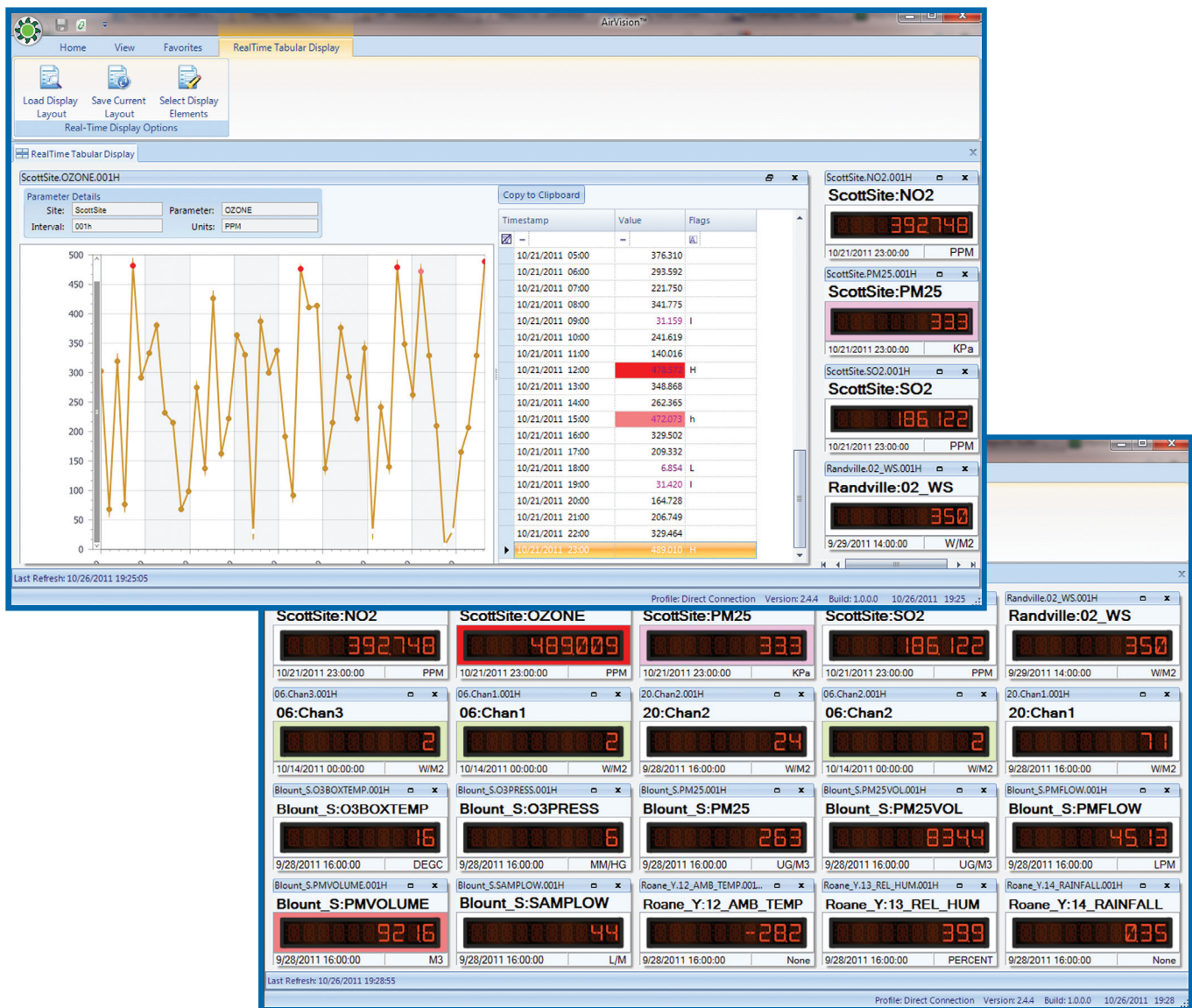
The screenshot shows the AirVision software interface. The top menu bar includes Home, View, Favorites, and Alarm Display. Below the menu bar, there are buttons for Acknowledge Selected Alarms, Return to Normal Selected Alarms, Automatic Refresh, Scroll to Newest Alarm, and Display New Alarm Popups. The main navigation pane on the left includes Status Displays, Alarm Display, and Realtime Data Trending. The main display area shows a table of alarms with columns for Alarm, Start Time, Acknowledged, Active, Site, Parameter, and Interval. The table contains several rows of alarm data, including Opac_HH and Opac_high alarms. Below the table, there are sections for Alarm Filters, Alarm Details, and Associated Readings. The Alarm Details section shows the Alarm Name as Opac_high, the Alarm Description, and the Triggering Parameter as Site1, Opacity, 001m. The Associated Readings section shows the Alarm Acknowledged Time, Reason Code, User Acknowledging Alarm, Action Code, and Alarm Memo.

- ▲ Alarm Display Panel - user can filter if they want to only see active alarms, unacked alarms, etc. When an alarm is selected, the user can see details (including a list of the triggering readings) via the bottom panel.

Flexible. Powerful.

Computation Engine

AirVision/CEM includes a central math processor for post-data calculations, such as calculation of production-based emission rates (e.g., emission lbs / ton production). Production data can be manually entered or automatically imported from CSV files using our Generic File Import Tool.



- ▲ Users can define multiple Real-time tabular displays, if needed, for each process or comparison needed. ▲
- Users can click to zoom to a recent history trend display for a parameter.

Professional Project Management

AirVision/CEM is supported by staff with 40CFR60 CEM experience going back to 1988. We can expertly determine your requirements, preconfigure, and pre-test a system ready to install for minimal downtime.

System Requirements

Data/Application Server

- Windows XP, 7, Server 2008
- MS - SQL 2005/2008
- 4 GB RAM

Client / Work Station

- Windows XP, 7, Server 2008
- 2 GB RAM
- 1280 - 1024 Display

Supported Controllers

- ESC Model 8816/8832
- Agilaire 8872
- Tekran Internal CEM Controller
- Any Modbus-Capable PLC/DCS
- Remote I/O Modules



2904-B Tazewell Pike, Suite A
Knoxville, TN 37918

865-927-9440 phone
865-927-9552 fax

info@agilairecorp.com email
www.agilairecorp.com web